



WisImage®

f o r W i n d o w s

No difference between
raster and vector

Ultimate image processing tools

Automatic R2V and
V2R conversion

Intelligent raster selection and editing

Modern customizable interface

Open Architecture

Internal and External OCR support

Batch processing

WisImage 6.0 for Windows – customer focus

WisImage® 6.0 is a standalone raster-vector application with open architecture. New Windows® XP-style interface, various customization options, new sophisticated tools and productivity enhancement, makes the new WisImage an ultimate solution for customers who work both with raster and vector data.

In version 6.0 a user can stream the power of a raster-vector (raster images overlaid with vector elements) editor and raster to vector converter by a fantastic set of original processing tools and the ability to develop custom ones in scripting host. Multiple raster images can be loaded and the number of raster images handled simultaneously is unlimited. WisImage allows you to edit, update, and convert (both semi-automatically and automatically) to vectors scanned maps, drawings, sketches, and other graphics.

What's new in version 6.0

- Windows XP-style toolbars, dialog boxes and palettes
- User defined buttons both in size and appearance
- Multi preview windows and built-in files browser
- New vector entities, special symbol insertion procedure and hyperlinks
- Blocks with attributes and Style manager for line types
- Sophisticated raster editing tools – Color Classifier and Adaptive Binarization
- Processing acceleration and productivity enhancement
- Performance TIFF options, LizardTech MrSID and PDF file format support
- Multiple User Coordinate Systems
- New WiseObject selection and separation tools. Semitransparent selection
- Raster Properties quick tuning toolbar
- Open Architecture

Features and Benefits

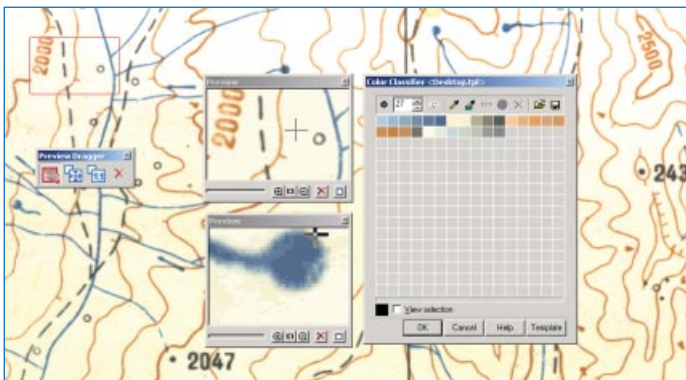
- Data capture and editing capabilities
- Treating of raster and vector objects in the same way
- Intelligent recognition of geometric shapes in raster
- Internal and external OCR capabilities for handling different types of text
- Assigns properties to raster objects
- Supports DWG/DXF, ESRI's SHP files, Multi page TIFF and PDF
- Automation and Scripting



Working with color and grayscale raster images

In WiselImage it is possible to crop color and grayscale raster images, change their resolution and scale, deskew them, and eliminate linear and non-linear deformations using the calibration feature. In the new version a user can easily manage the colors of the image and create/edit LUT files in the Color Classifier or can perfectly operate with blueprints (scanned in grayscale mode) by a specific tool – Adaptive Binarization.

It is surely possible to change brightness, contrast, hue and saturation, adjust the color gamut of an image using a histogram, improve image quality and apply a set of color filters (Blur, Unsharp, Mask, Median, Gamma Correction). With WiselImage, a user can draw on these images and create raster objects by rasterizing vector objects to color raster, and merge monochrome raster images with color ones.



Tracing capabilities

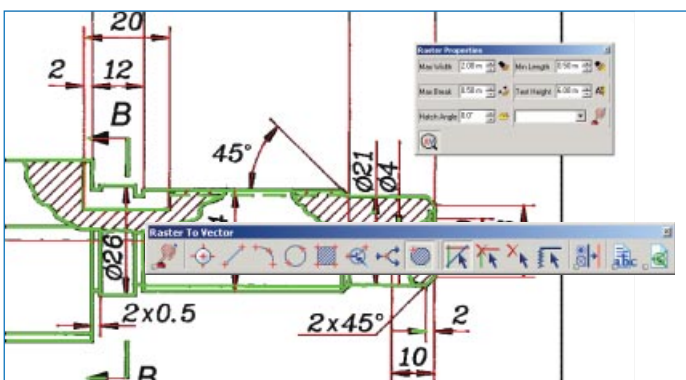
WiselImage has an advanced tracing function (semi-automatic, interactive raster to vector conversion) for color and grayscale images. In addition to simple graphic object tracing in WiselImage, it is possible to trace raster shapes that correspond to vector templates. Select a raster shape and WiselImage will recognize it and match it to the appropriate vector object from the loaded symbol (block) library or a customized library designed to match user requirements. The polyline tracing feature has an auto-detection of tracing direction.



Automatic raster to vector conversion (Pro version)

WiselImage enables the conversion of scanned drawings to CAD files one by one or in a batch mode – even overnight. This conversion feature allows precise tuning to achieve the most accurate vector representation of the source files. Or it can be done on the fly by a new 'R2V controls' toolbar.

The original or custom line styles, widths, text height, and hatch styles are preserved. The result of the vectorization consists of lines, polylines, arcs, circles, text, and shapes (blocks). WiselImage Pro has a built-in OCR feature (there is a possibility to use optional external ABBYY FineReader OCR plug-in) that recognizes text strings at any angle on a drawing.



Vector enhancement tools (Pro version)

WiselImage Pro has a comprehensive set of tuning tools for auto-correction of vectors obtained after raster to vector conversion. There are specialized functions for editing vectors, such as merging a group of vectors to the object of a given type (some segments to an arc or circle), cropping, extension, etc.

Open Architecture (Pro version)

WiselImage 6.0 provides a revolutionary breakthrough in the ability to use the WiselImage open architecture and ActiveX technology in automation and scripting tools. The Java script and VB script editor studio is now available in the WiselImage Pro version. Now scripts and procedures can be freely created and modified. Moreover, the visual HTML- form editor has been added for convenience.